



## Russia, Belarus – practical issues on legality verification



Funded by the LIFE programme of the European Union and UK Aid from the UK government. The European Commission support for the production of this publication does not constitute endorsement of the contents which reflects the views only of the authors, and the Commission cannot be held responsible for any use which may be made of the information contained therein. This material has been funded by UK aid from the UK government; however the views expressed do not necessarily reflect the UK government's official policies.





# Global World: USA – CHINA - RUSSIA

Lumber Liquidators Holdings, Inc. (LL) ★ Watchlist

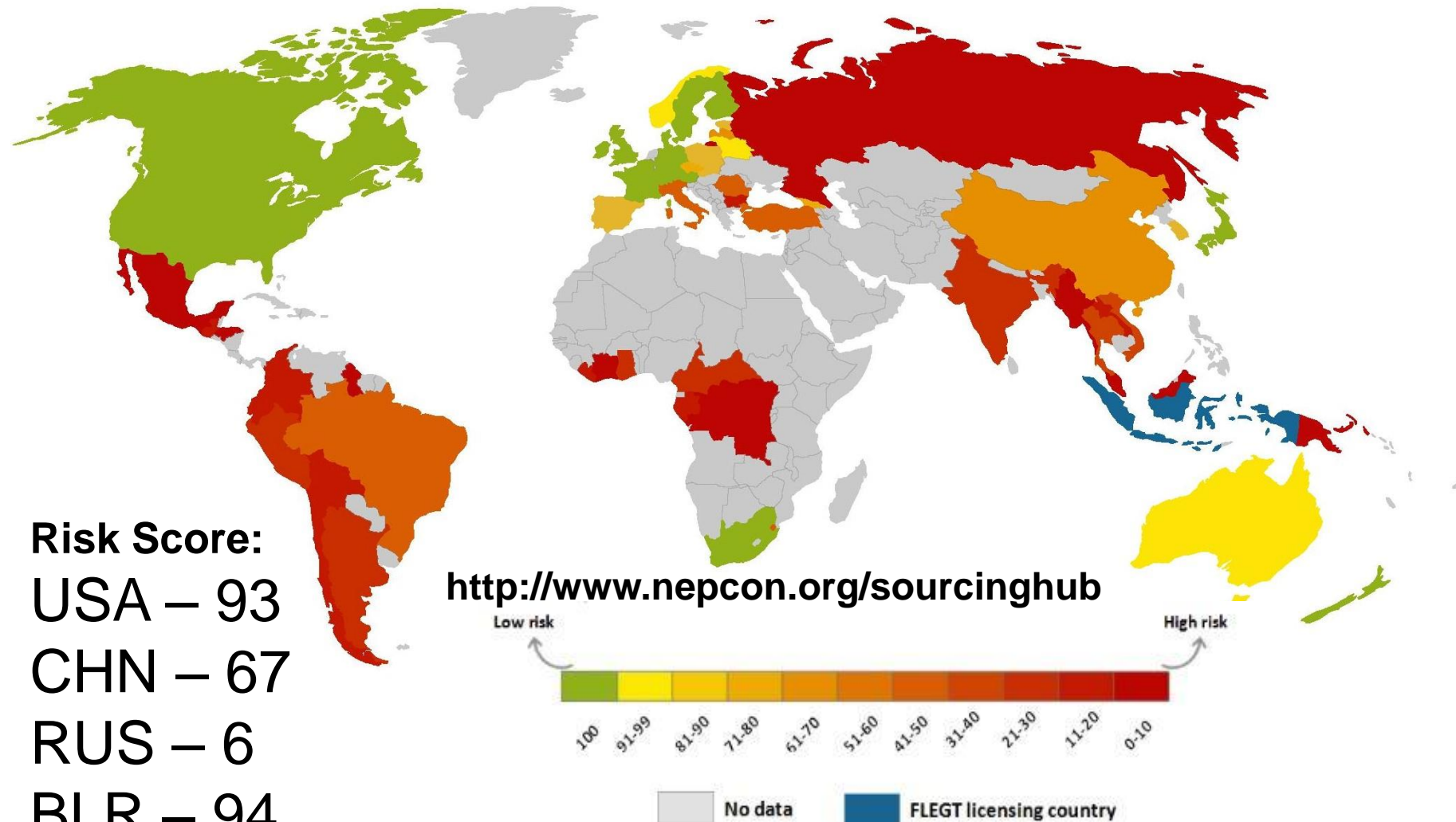
**13.34** -0.60 (-4.30%) NYSE - As of 11:01am EDT

Beat the market

Get the app



## Timber Risk Assessments





## ILLEGAL LOGGING AND TRADE – HOW THEY DO IT?



## What can you do?

### Corruption perception index in 2016



#### RUSSIA: Bans and restrictions

**Logging ban:** Ban on logging Korean pine  
**Other restrictions:** Russia might implement a temporary export ban on birch logs.

#### BELARUS: Bans and restrictions

**Log export ban:** The export of pulpwood, veneer logs and sawn logs is prohibited unless otherwise authorised by the President of Belarus

### Key Documents



Forest level



Trade and transport



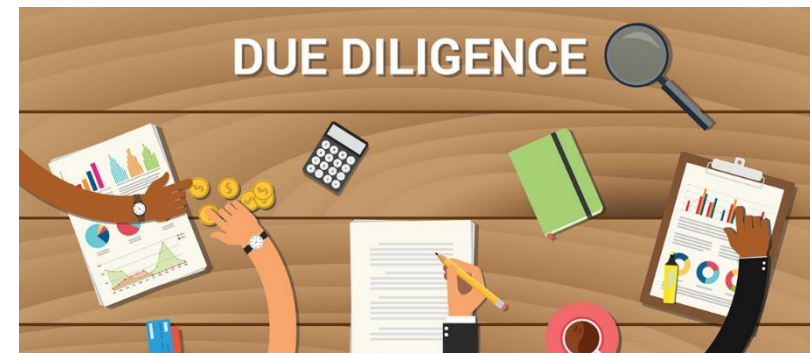
Export and custom

### Field Inspections

**You can check!**

## What can help?

- Certification schemes
- National information systems
- Your own DDS
- EUTR Monitoring organizations





## Russian forest sector information system

**GOAL** - Suppression of illegal logging and illegal timber trade

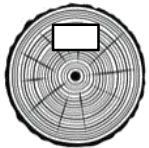
### TOOLS:



A ban on the disposal of timber harvested by citizens for their own needs



Wood transport only with accompanying document



Marking of wood of valuable species (oak, beech, ash)



Declaration of transactions with timber



The introduction of administrative liability for violation of forest legislation of accounting of wood and transactions with it



The creation of the unified state automated information system of accounting of wood and transactions with it. <http://www.lesegais.ru/>

**How can you check?**

**That is the question**